

DURATION OF VET EXPERT SHAMPOO THERAPY

The classic scheme of shampoo therapy includes a 6-week program:



REMEMBER!

Each patient case is different. During therapy essential is regular control visit. Based on it the Veterinarian makes an assessment of the depth of infection and decide on the final duration of treatment support or the number of baths.



SPECIALIST SHAMPOO

EFFECTIVE AND SAFE
HEALING SUPPORT
OF SKIN DISEASES



SPECIALIST SHAMPOO

HIGH EFFICIENCY PROVEN
IN VETERINARY TESTS

soothes itching and
irritation

cleanses the skin
and helps maintain
an optimal pH



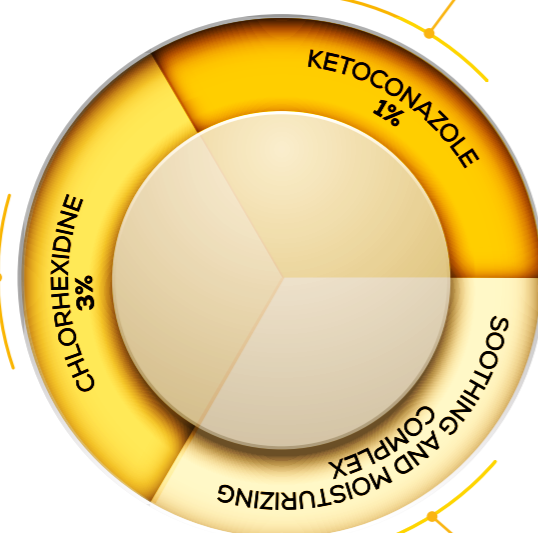
supports the treatment
of skin diseases caused
by bacteria and fungi

reduces the intensity
of skin lesions
accompanying
inflammation

THE MOST EFFECTIVE SUPPORT IN THERAPY OF SKIN
DISEASES CAUSED BY BACTERIA OR FUNGI, THANKS
TO OPTIMALLY SELECTED INGREDIENTS:

Chlorhexidine:

- clinically proven high efficiency in eliminating most yeast and bacterial infections.



Ketoconazole:

- 2nd generation antifungal ingredient
- broad spectrum of activity, including against dermatophytes, yeasts, and polymorphic fungi.

The complex of panthenol and glycerin:

- restores the proper level of skin hydration,
- soothes irritations.

SPECIALIST SHAMPOO INDICATIONS:

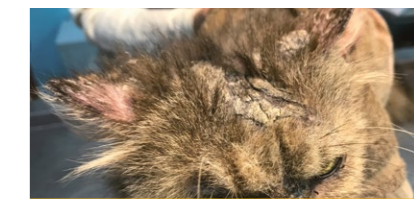
Specialist Shampoo is intended for skin care prone to inflammation bacterial or fungal, e.g.: *Malassezia dermatitis*, *Microsporum canis*, *Nannizzia persicolor*, *Phlegmon* (deep and superficial).



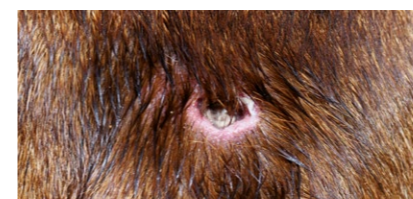
Nannizzia persicolor



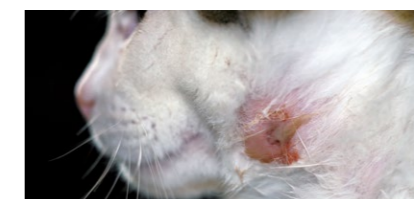
Malassezia dermatitis (dog case)



Malassezia dermatitis (cat case)



Phlegmon (dog case)



Phlegmon (cat case)



Microsporum canis

CLINICALLY PROVEN:

The clinical trials of the Specialist Shampoo terms:

- Number of tested patients:** 200 dogs divided into 4 groups.
- Patients groups:** depending on the clinical symptoms and the results of the cytology examination.
 - Group 1: patients with staphylococcal infection as a complication of atopy and/or food allergy.
 - Group 2: dogs with intertriginous dermatitis.
 - Group 3: patients with excessive proliferation of Staphylococcus syndrome.
 - Group 4: dogs with Malassezia inflammation of the skin.
- Frequency of bathing and duration of shampoo therapy:**

Curative baths, in every case were performed 6 times with specified time intervals. The first four baths were made every 7 days and two next ones – with two week intervals. The total duration of the local therapy was 6 weeks. The bath of each patients was made according to identical recommendations.

Result:



Complete or partial reduction of diseases symptoms are seen in **86% of cases**.**

SAFE SHAMPOO FORMULA



* Chlorhexidine concentration for effective control of Staphylococcus and Malassezia yeast is 2, Source: ESCCAP Guideline 02 Fourth Edition - February 2019

** Clinical trial results of Vet Expert Specialist Shampoo after 8 weeks of therapy. Performed by J. Karaś-Tęcza DVM